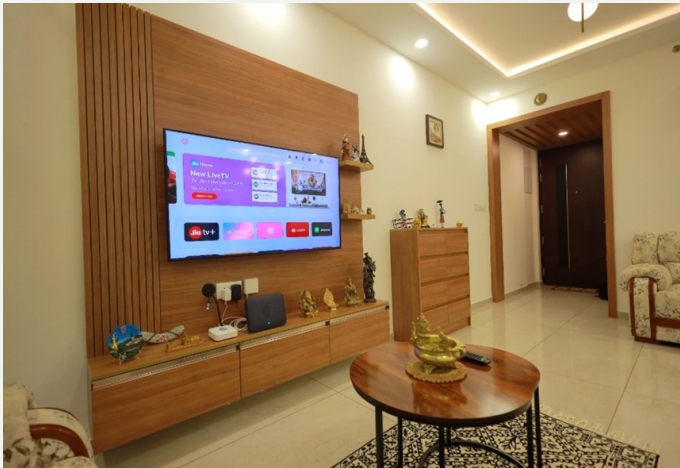


ASSET PKS HERITANCE 5D: A CONTEMPORARY HOME ROOTED IN COMFORT

Asset PKS Heritage 5D redefines everyday living through interiors that strike a balance between elegance and comfort, creating a space that leaves a subtle yet lasting impression. The design is guided by a clean and contemporary approach, where warm wooden textures, soft neutral tones, and carefully placed accents come together to form a cohesive and inviting environment.

Every space is thoughtfully curated to enhance functionality while maintaining visual harmony, with seamless transitions and uncluttered layouts. Ambient lighting, efficient storage solutions, and refined detailing elevate the overall experience, resulting in a home that feels sophisticated, practical, and naturally comfortable to live in.



LIVING ROOM

The living room is envisioned as a spacious and cohesive setting that balances visual simplicity with functional comfort. The TV feature wall, finished in warm wood, acts as a subtle focal point, enhanced by vertical detailing that adds rhythm and texture to the surface. The floating base unit keeps the design light and streamlined, while curated décor elements introduce a sense of individuality.

The seating layout is arranged to define the space without interrupting flow, allowing a smooth transition between the living and dining zones. A combination of soft furnishings, muted tones, and natural light creates a relaxed atmosphere, while layered lighting—from cove illumination to recessed fixtures—adds depth and warmth during the evening. The overall composition is calm and uncluttered, making the living room both aesthetically pleasing and comfortable for everyday living.





DINING ROOM

The dining area is designed as a lively yet balanced space that adds a refreshing contrast to the overall neutral palette of the home. A soft green accent wall forms the backdrop, bringing vibrancy and visual interest, while the dining chairs in complementary tones enhance the cohesiveness of the space. The dining table, with its clean form and warm wooden base, anchors the area and maintains a sense of simplicity.

A statement pendant light above the table acts as a focal element, adding both character and functional illumination. The ceiling design with subtle cove lighting further enhances the ambience, creating a warm and inviting atmosphere. The space is planned to connect seamlessly with the living area, allowing openness and easy movement, while the minimal décor and controlled colour palette ensure the dining area feels fresh, comfortable, and well-integrated within the home.

POOJA AREA

The pooja area is treated as a compact architectural element, defined by its clean proportions and symmetrical placement within the passage. The unit is designed with a stepped profile that subtly references traditional forms while maintaining a modern, simplified expression. The use of wood as the primary material establishes continuity with the rest of the interiors, ensuring the space feels integrated rather than isolated.

The composition is kept minimal and well-structured, with clearly defined shelves and a balanced layout that avoids visual clutter. The framing between the two doorways further enhances its presence, creating a natural focal point within the circulation space. Overall, the design achieves a refined balance between tradition and contemporary simplicity through form, proportion, and material consistency.





COMMON WASH AREA

A clean and contemporary approach defines the common wash area, where functionality is combined with a refined material palette. The floating vanity in a muted green finish introduces a subtle contrast, while still maintaining continuity with the overall interiors. A sleek countertop paired with a vessel basin keeps the composition minimal and visually light.

The full-width mirror enhances spatial perception, reflecting light and adding depth to the compact area. A neatly finished tiled backsplash provides texture without overpowering the design. The layout remains simple and efficient, resulting in a space that feels organized, practical, and well-balanced.

MASTER BEDROOM



The master bedroom is composed with a focus on comfort, simplicity, and functional clarity. A soft upholstered headboard forms the focal point of the space, adding warmth and a sense of ease against the otherwise neutral backdrop. The bed is positioned to maintain openness, allowing for smooth movement and a visually uncluttered layout.

A full-height wardrobe in a consistent wood finish defines one side of the room, offering ample storage while maintaining a clean and uniform appearance. The integrated niche with a mirror breaks the solidity of the wardrobe, adding depth and usability without disrupting the overall composition. Minimal detailing, soft lighting, and controlled natural light contribute to a calm and balanced environment, making the space both practical and restful.

BEDROOM 2



The second bedroom is designed with a strong emphasis on functionality and clean detailing, while maintaining a warm and cohesive visual language. The bed becomes the central element, featuring a wooden headboard with vertical paneling that adds texture and continuity to the overall design. Integrated storage within the bed base enhances usability, making efficient use of space without adding visual bulk.

The layout is kept simple and well-organized, allowing for easy movement and a clutter-free environment. A compact bedside unit complements the bed design, maintaining consistency in material and finish.

The use of soft natural light through full-height curtains adds brightness and softness to the room, while the restrained material palette ensures the space feels comfortable, practical, and visually balanced.

KITCHEN



The kitchen follows a clean and efficient layout, organized in an L-shaped configuration that ensures smooth workflow and optimal use of space. A combination of light-toned cabinetry and dark countertops creates a balanced contrast, giving the space a bright yet grounded appearance. The handle-less shutters and continuous finishes contribute to a seamless and clutter-free look.

The backsplash becomes a strong visual element, running continuously across the walls and adding depth through its patterned surface. Overhead units are designed to maximize storage while maintaining a streamlined profile, with selective glass shutters introducing variation and reducing visual heaviness. The tall cabinetry further enhances storage capacity, keeping the overall arrangement organized and efficient.

Clear zoning of cooking, preparation, and washing areas improves usability, while the uninterrupted counter space allows for comfortable daily use. The overall design maintains a consistent language of simplicity and functionality, resulting in a kitchen that feels well-planned, practical, and visually cohesive within the home.



Team behind design
and execution:

Akhil Sivaraman
Anju A V
Shameena Shafeeque
Sruthi Suresh
Arunima joy
Jasmin joy

Reach us at: interiors@assethomes.in
Call: 99461 00216

